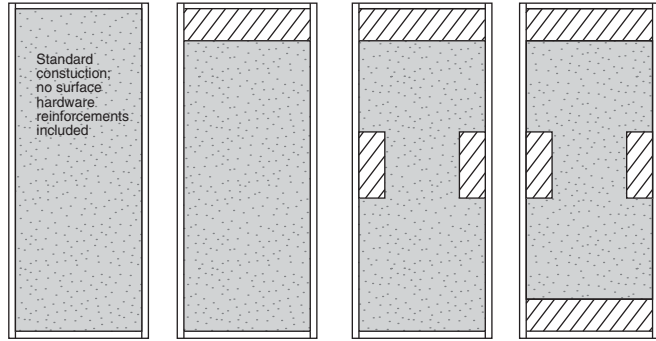


Door Core Reinforcement Options (Hardware Blocking)

Specify by model and mark in the **Core Model** column of Schedule D
or list in **Fire Door Core Model** box of Schedule C

FD 1½, 1 and ¾ Hour Composite Type Fire Doors

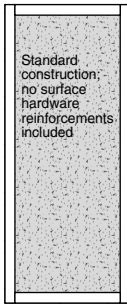


Model A B C D

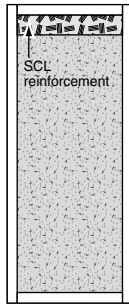
1. Reinforcements for attaching surface mounted hardware with screws shown cross hatched.
2. Models A through D shall have reinforced stile (Superstiles) for mortised hinges unless manufacturer advises otherwise.
3. Matching Veneered or compatible lumber stiles on models A through D are usually available as an option at extra cost.

FD ½ Hour Wood Core Fire Doors

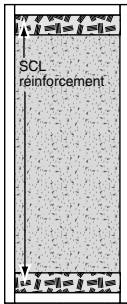
**Particleboard Core
PC-5**



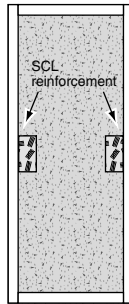
Model E



F

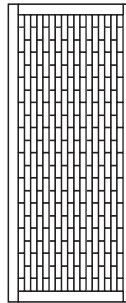


G



H

**Stave Core
SLC-5**
No special
reinforcement
needed.



**Structural
Composite
Lumber
SCLC-5**
No special
reinforcement
needed.



DOOR CORE REINFORCEMENT OPTIONS v1

DATE	REVISIONS	BY	JOB NAME		
			DRAWN BY		DATE
			CONTRACT/JOB NO.		SCHEDULE G
					SHEET _____
					OF _____