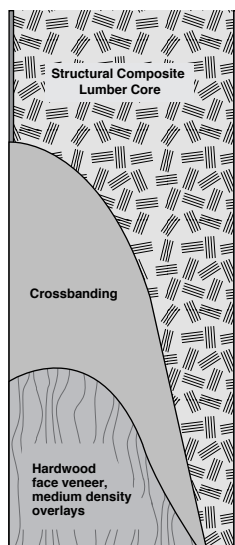


SCLC-5 Structural Composite Lumber Core

FD 1/3 Hour Door (Neutral or Positive Pressure)

See text below
for Stile dimensions



Algoma's Architectural Structural Composite Lumber Core door utilizes an engineered hardwood strand board that is oriented and resin bonded to provide physical properties that equal or exceed solid lumber.

Stiles are securely bonded to the core. This construction provides strength, rigidity, and screw-holding power for surface mounted hardware to satisfy the most demanding applications.

Algoma uses only face veneers at least .020" (.5mm) thick at 12% moisture content.

Positive Pressure Note: Algoma recommends using Category B 1/3 hour single swing doors. Please refer to Positive Pressure in Product Features Detail Section below. The selection of Category B 1/3 hour doors will offer cost savings and no aesthetic compromise.

Product Features

Thickness	1 3/4" (44mm) available FD 1/3 hour labeled. 1 5/8" (35mm) available non-labeled.
Maximum size	Available prefit up to 4'0" x 10'0" (1219 x 3048mm). In FD 1/3 hour, 4'0" x 9'0" (1219 x 2743mm) is maximum for singles and 8'0" x 9'0" (2438 x 2743mm) for pairs. Also available in double egress pairs up to 8'0" x 9'0" (2438 x 2743mm).
Stiles (Edge bands)	7/8" (22mm) prior to factory trimming, glued to core. Alternates: ME—same species or CE—compatible edges.
Special edge treatments	To reduce edge damage, polymer edges with 1/3 hour label available.
Top & bottom rails	Structural composite lumber (industry standard does not require separate rails on this construction).
Core	Structural composite lumber core.
Crossbands	1/16" (1.6mm) minimum wood-based composite.
Faces	All foreign and domestic species, medium density overlay (MDO) and most low sheen .050 thickness High Pressure Decorative Laminates. Faces are a minimum of 1/50" (0.5mm) at 12% moisture content. All faces to be per WDMA I.S.1-A face grades unless otherwise specified.
Adhesive	Doors constructed using water-resistant adhesives (Type 2).
Veneer matching	Available in pairs, sets or matching transoms.
Details	Standard lites and louvers available not to exceed 40% of door area or 54" (1372mm) in length. Maximum glass opening on FD 1/3 hour doors is 1,296 sq. in. (0.836m ²) with wood beads or metal vision panels. Applied mouldings and quirks also available. Contact Algoma for positive pressure approvals. See Details 11 and 12.
Machining	Available with hinge and lock machining as well as rabbets, holders, drop seals, pivots, etc.
Finishing	Available in finishes with performance characteristics equivalent to WDMA System TR-6, standard or custom colors. Also available primed, sealed, or sealed top and bottom edges only. Opaque finish (OP-6) on medium density overlay only.
Warranty	For interior, full warranty for life of original installation.
Standards met or exceeded	WDMA I.S.1-A Series, ARCHITECTURAL WOOD FLUSH DOORS. Architectural Woodwork Quality Standards Section 1300, Architectural Flush Doors and Section 1500, Factory Finish.
Special services	Provides detention security rating of Grade #40 with ASTM Impact Test F 476.
Positive Pressure	Category A: Singles and pairs have intumescent built into the door, and no additional fire seals are required. If smoke and draft control doors are also required, then a category H seal must be applied to the frame. Category B: Singles and pairs require a category G edge seal applied to the frame. Pairs also require a category G edge seal applied to one of the meeting edges.

SCLC-5 Structural Composite Lumber Core FD 1/3 Hour Door

FEATURE	LABEL		
	ITS/WHI	UL	UL or ITS/WHI AHI FD 1/3 Hour Door/Transom
MAXIMUM OPENING SIZE	Singles: 4'0" x 9'0" (1219 x 2743mm). Pairs: 8'0" x 9'0" (2438 x 2743mm), including double egress. Pairs over 8'0" (2438mm) in height need metal edge guards. Positive pressure 4'0" x 8'0" and 8'0" x 8'0" double egress.	Singles: 4'0" x 9'0" (1219 x 2743mm). Pairs: 8'0" x 9'0" (2438 x 2743mm), neutral and positive pressure, including double egress. With listed concealed rods: 8'0" x 9'3" (2438 x 2819mm).	UL Opening: 4'0" x 11'0" (1219 x 3353mm). ITS/WHI Opening: 4'0" x 10'0" (1219 x 3048mm). Door: 4'0" x 8'0" (1219 x 2438mm). Transom: 4'0" x 4'0" (1219 x 1219mm).
FACES	All foreign and domestic species, medium density overlay (MDO) and most low sheen .050 thickness High Pressure Decorative Laminates. Faces are a minimum of 1/50" (0.5mm) at 12% moisture content. All faces to be per WDMA I.S.1-A face grades unless otherwise specified		
STILES (VERTICAL EDGES) AND RAILS	All doors have either same species or compatible outers. Up to 13 1/2" (343mm) bottom rails allowed. Plastic laminate edges after faces.		Door/transom rabbeted 1/2" x 7/8" (13 x 22mm).
MAXIMUM WOOD BEADED LITE	1296 sq. inches (0.836m ²). Maximums: 30" (762mm) width, 54" (1372mm) length. Larger lites available with special glazing. Contact Algoma for positive pressure approvals.		
MAXIMUM METAL VISION PANEL (Visible glass)	1296 sq. inches (0.836m ²). Maximums: 30" (762mm) width, 54" (1372mm) length. Larger lites available with special glazing. Contact Algoma for positive pressure approvals.		
MAXIMUM LOUVER SIZE (Not allowed with vision panel, exit devices, or smoke control doors)	Not allowed.	24" x 24" (610 x 610mm). Minimum 5" (127mm) from edge and 10" (203mm) from bottom. Neutral pressure only.	Not allowed.
HINGES Note: Per NFPA 80 some specialty hinges allowed. Contact Algoma for information.	Ball bearing steel mortised, half or full surfaced 4 1/2" x 4 1/2" x .134" (114.3 x 114.3 x 3.4mm) to 10'0" (3048mm). UL listed spring hinges 4 1/2" x 4 1/2" x .134".	Ball bearing steel mortised, half or full surfaced 4 1/2" x 4 1/2" x .134" (114.3 x 114.3 x 3.4mm) to 10'0" (3048mm). UL listed spring hinges 4 1/2" x 4 1/2" x .134". Anchor hinges allowed.	Ball bearing steel mortised, half or full surfaced 4 1/2" x 4 1/2" x .134" (114.3 x 114.3 x 3.4mm) to 10'0" (3048mm). UL listed spring hinges 4 1/2" x 4 1/2" x .134".
LOCKSETS	All listed cylindrical, mortise, unit, card, electric lock, and hospital push/pull to 5" (127mm) backset.		
PIVOTS	Top, intermediate & bottom must be listed offset. Rixon's #180, 280, 380, 480, FM19, 219, T117, T117 1/4, Unichecks 65 thru 68, or equal. Others as approved, including pocket pivots.		Half or full mortised; top pivots not allowed unless frame is equipped with a fixed transom bar.
CLOSERS	Listed surface type or LCN using #420 Fireshield or Norton with Fire Block Liner #790, or Yale with Fire Block Liner #450.	Listed surface type. Concealed closer arms and stops can be mortised in the top rail as long as the dimensions do not exceed 1 3/8" wide x 1 3/4" deep x 25" long.	Listed surface type.
FIRE EXIT HARDWARE (Allowed with vision panel if non-interfering)	Singles: Listed mortise, rim or surface vertical rods. Pairs: Listed rim (with mullion), surface vertical rods, or concealed vertical rods (5" metal channel/8'0" x 8'0"). Double egress allowed.	Singles: Listed mortise, rim, or surface vertical rods. Pairs: Listed rim (with mullion), surface vertical rods, or concealed vertical rods (5" metal channel/8'0" x 8'0"). Double egress allowed.	Singles: Listed mortise, rim or surface vertical rods. Pairs: Not available.
OTHER PAIR HARDWARE	Listed surface or mortised door bolts. Manual, self-latching or automatic as codes allow.	Listed surface or mortised door bolts. Manual, self-latching or automatic as codes allow.	Not allowed
Maximum trim: 3/4" (19mm) at bottom. Undercut: Maximum undercut, 3/4" (19mm) per NFPA 80.	Door Bottoms: Max size 1"x1 1/4" listed surface or concealed. Viewers: ITS/WHI up to 1" (25mm); UL up to 1" (25mm).	Edges: Polymer edges allowed where edge damage is likely. Astragals and edge guards: Must be supplied and cut for hardware under label service.	Wood Frames: FD 1/3 Hour doors can be installed with 1/2 hour wood frames. Electric Raceway: Available with label on all doors.