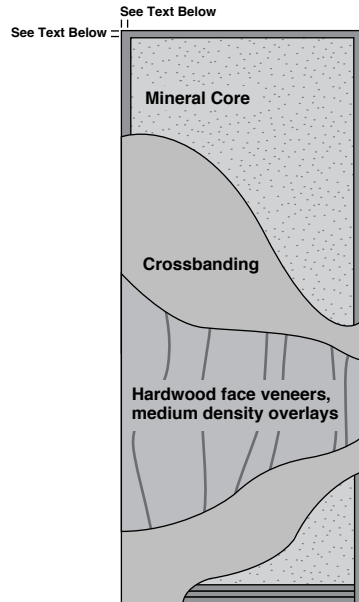


FD 1½ Hour Door

(Neutral or Category B Positive Pressure)*



Algoma Hardwoods, Inc. has been making mineral core fire doors for more than 50 years. The mineral core door listed here has stood the test of time. The Algoma Mineral Core is unusually light and remarkably stable.

The 1½ hour mineral core fire door, available in UL or ITS/WHI ratings, is suitable for room and corridor partition openings where rated doors are required.

The FD 1½ Hour is manufactured with the Superstile for superior screw holding strength and split resistance. Also, reinforcements can be specified which allow surface mounted hardware to be installed with screws.

Surface Vertical Rod/Less Bottom Rod (SVR/LBR) and Concealed Vertical Rod (CVR) exit devices can both provide compliance with the Americans with Disabilities Act (ADA). CVR exit devices require the addition of metal edge channels which are not required with SVR/LBR exit devices. In addition, SVR/LBR exit devices are less expensive to install and require less maintenance.

*Some constructions may only be available as Category A.

Product Features

Thickness	1¾" (44mm), 2¼" (57mm)
Maximum size	Available prefit up to: Singles: 4'0" x 9'0" (1219 x 2743mm). Pairs: 8'0" x 9'0" (2438 x 2743mm), including double egress pairs. Listed concealed vertical rods: 8'0" x 9'3" (2438 x 2819mm)
Stiles (Edge bands)	⅝" (16mm) Superstile
Top rail	regular ¼" (6.4mm) hardwood lumber. reinforced See Door section table of contents.
Lockblocks	For exit device reinforcement, see Door section table of contents.
Bottom rail	regular 1⅛" (27mm) hardwood lumber reinforced See Door section table of contents.
Faces	All foreign and domestic species, medium density overlay (MDO) and most low sheen .050 thickness High Pressure Decorative Laminates. Faces are a minimum of ⅛" (0.5mm) at 12% moisture content. All faces to be per WDMA I.S.1-A face grades unless otherwise specified.
Crossbands	⅛" (1.6mm) minimum wood-based composite.
Adhesives	Doors constructed using water-resistant adhesives (Type 1).
Veneer matching	Available as pairs, sets or matching transoms.
Wood beaded lite openings	Maximum 136 in ² (0.088m ²) cutout or 100 in ² (0.065m ²) visible glass. Larger lites available with special glazing. No temperature rise over 100 in ² . See Detail 11 for glass options.
Metal vision panels	Maximum 100 in ² (0.065m ²) visible glass. Maximums: 12" (305mm) width, 33" (838mm) length. Larger lites available with special glass. No temperature rise over 100 in ² . See Detail 11 for glass options.
Louvers	Up to 24" x 24" (610 x 610mm). Louver(s) not allowed in doors with lite openings, exit devices or smoke control doors.
Machining	See reverse side.
Finishing	Available in finishes with performance characteristics equivalent to AWI and WDMA Systems TR-6, standard or custom colors. Also available primed four sides, sealer six sides or sealed top and bottom. Opaque finish (OP-6) on MDO only.
Warranty	For interior only, full warranty for life of original installation.
Standards met or exceeded	WDMA I.S.1-A Series, ARCHITECTURAL WOOD FLUSH DOORS. Architectural Woodwork Quality Standards Section 1300, Architectural Flush Doors and Section 1500, Factory Finish.
Positive Pressure	Category B: Singles and pairs require a category G edge seal plus a Category H smoke seal applied to the frame. Pairs also require a category G edge seal applied to one of the meeting edges.

FD 1½ Hour Door

COLUMN	1	2
FEATURE	UL or ITS/WHI (Note: All items may not be available with both agencies.)	
MAXIMUM OPENING SIZE	Singles: 4'0" x 9'0" (1219 x 2743mm). Transom: 4'0" x 4'0" in a separate frame only. Side Panels: 4'0" x 9'0" (1219 x 2743mm).	Pairs: 8'0" x 9'0" (2438 x 2743mm), including double egress With listed concealed rods: 8'0" x 9'3" (2438 x 2819mm),
FACES	All foreign and domestic species, medium density overlay (MDO) and most low sheen .050 thickness High Pressure Decorative Laminates. Faces are a minimum of 1/50" (0.5mm) at 12% moisture content. All faces to be per WDMA I.S.1-A face grades unless otherwise specified.	
STILES AND RAILS	5/8" (16mm) Superstile with maple outer. Optional same species or plastic outer available. Top rail 1/4" (6.4mm). Bottom rail 1/16" (27mm). For rail and lock block reinforcement, see Door section table of contents.	
MAXIMUM WOOD VENEERED BEADED LITE	To 136 sq. in. (0.088m ²) of cutout (100 sq. in. (0.065m ²) of visible glass). Maximums: 13" (330mm) width, 34" (864mm) length. Minimum 5" (127mm) perimeter from cutout to top and sides or lock. V-9 and V9C bead compatible with face veneer. To 1,296 sq. in. with special glass and approval of AHJ (authority having jurisdiction). No temperature rise over 100 in ² . See Detail 11 for glass options.	
MAXIMUM METAL VISION PANEL (Visible glass)	To 100 sq. in. (0.065m ²) visible glass. 10" x 10", 8" x 12", 3" x 33", 5" x 20", 4" x 25", 6" x 16" sizes available. (254 x 254mm, 203 x 305mm, 76 x 838mm, 127 x 508mm, 102 x 635mm, 152 x 406mm sizes available.) Maximums: 12" (305mm) width, 33" (838mm) length. Minimum 5" (127mm) perimeter from cutout to top and sides or lock. Combined multiple openings up to 100 sq. in. (0.065m ²). Circular openings up to 11" (279mm) diameter. To 1,296 sq. in. with special glass and approval of AHJ (authority having jurisdiction). No temperature rise over 100 in ² . See Detail 11 for glass options.	
MAXIMUM LOUVER SIZE (Not allowed with vision panel, exit devices, or smoke control doors)	24" x 24" (610 x 610mm) with 6" (152mm) perimeter at sides, 10" (254mm) at bottom. Fusible link louvers only.	
HINGES	Per NFPA 80. Some specialty hinges allowed. Contact Algoma for information.	
LOCKSETS	All listed cylindrical, mortised, unit, card, electronic locks, and hospital push/pull to 5" (127mm) backset.	
PIVOTS	Top, intermediate & bottom must be listed offset. Rixon's #180, 280, 380, 480, FM19, 219, T117, T117 1/4, Unichecks 65 thru 68, or equal. Others as approved. Pocket pivots not allowed. Intermediate pivots required for label and warranty.	
CLOSERS	Listed surface type. Throughbolt fastening required unless optional reinforcement is specified. Listed floor closers as approved. Concealed closer arms and stops can be mortised in the top rail as long as the dimensions do not exceed 1 3/8" wide x 1 3/4" deep x 25" long.	
FIRE EXIT HARDWARE	Singles: Listed rim or mortise type with 5/8" (16mm) throw or surface vertical rods to 4'0" x 9'0" (1219 x 2743mm). Pairs: Mortise type on active and surface vertical rods on inactive. Listed rim devices with removable mullion. Surface vertical rods both doors get metal channels. Surface vertical rods without metal channels require special construction. (Matching veneer wrap optional.) Listed concealed vertical rod exit devices to 8'0" x 9'3" (2438 x 2819mm) with special channels on meeting edges with no overlapping astragal. Hardware must be listed for use on wood doors. SVR-LBR on both doors requires metal channels prepped for heat activated bolt between the leaves, no floor bolts required. Sargent PP and PR8700 SVR-LBR require special construction; metal edges are not required.	
OTHER PAIR HARDWARE	Pairs of doors with removable or fixed mullion between are considered as single swing.	Listed for use with wood doors. Surface or mortised door bolts. Manual, self-latching or automatic as codes allow.
Maximum trim: 3/4" (19mm) at bottom with standard rail. Door Bottoms: Max size 1"x1 1/16" listed surface or concealed.	Viewers: ITS/WHI up to 1" (25mm); UL up to 1" (25mm). Astragals and edge guards: Must be supplied and cut for hardware under label service.	Electric Raceway: Available with label on all doors.