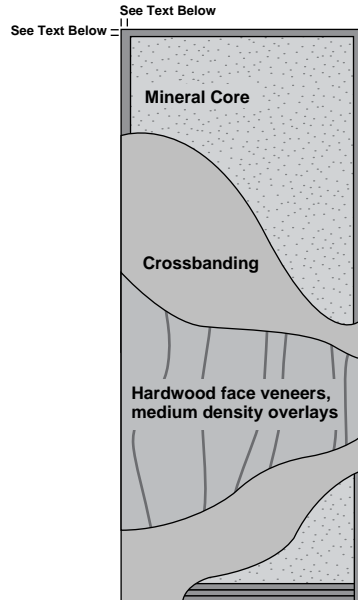


Positive Pressure Category A FD 1 Hour Door

Note: Category A doors feature a concealed intumescent engineered into the construction of the door.



Algoma Hardwoods, Inc. has been making mineral core fire doors for more than 50 years. The mineral core door listed here has stood the test of time. The Algoma Mineral core is unusually light and remarkably stable.

The FD 1 Hour is manufactured with the Superstile for superior screw holding strength and split resistance. Also, reinforcements can be specified which allow surface mounted hardware to be installed with screws.

The 1 hour mineral core fire door, available in UL rating, is suitable for room and corridor partition openings where rated doors are required.

Surface Vertical Rod/Less Bottom Rod (SVR/LBR) device provides compliance with the Americans with Disabilities Act (ADA) and do not require floor receivers on paired applications.

Product Features

Thickness	1¾" (44mm)
Maximum size	Available prefit up to: Singles: 4'0" x 9'0" (1219 x 2743mm); Category B: 4'0" x 9'0" (1219 x 2743mm). Pairs: 8'0" x 9'0" (2438 x 2743mm), including double egress pairs.
Stiles (Edge bands)	⅝" (16mm) Superstile
Top rail	regular ¼" (6.4mm) hardwood lumber. reinforced See Door section table of contents.
Lockblocks	For exit device reinforcement, see Door section table of contents.
Bottom rail	regular 1⅛" (27mm) hardwood lumber. reinforced See Door section table of contents.
Faces	All foreign and domestic species and medium density overlay (MDO). Faces are a minimum of ⅓0" (0.5mm) at 12% moisture content. All faces to be per WDMA I.S.1-A face grades unless otherwise specified.
Crossbands	⅛" (1.6mm) minimum wood-based composite.
Adhesives	Doors constructed using water-resistant adhesives (Type 2).
Veneer matching	Available as pairs, sets or matching transoms.
Wood beaded lite openings	Maximum 136 in ² (0.088m ²) cutout or 100 in ² (0.065m ²) visible glass. See Detail 12 for glass options. Larger lites available with special glass.
Metal vision panels	Maximum 100 in ² (0.065m ²) visible glass. Maximums: 12" (305mm) width, 33" (838mm) length. No temperature rise over 100 in ² . See Detail 12 for glass options.
Louvers	Up to 24" x 24" (610 x 610mm). Louver(s) not allowed in doors with lite openings, exit devices or smoke control doors.
Machining	See reverse side.
Finishing	Available in finishes with performance characteristics equivalent to AWI and WDMA Systems TR-6, standard or custom colors. Also available primed four sides, sealer six sides or sealed top and bottom. Opaque finish (OP-6) on MDO only.
Warranty	For interior only, full warranty for life of original installation.
Standards met or exceeded	WDMA I.S.1-A Series, ARCHITECTURAL WOOD FLUSH DOORS AND WDMA G-17, FACTORY FINISHING. AWI Section 1300-G-4, ARCHITECTURAL WOOD DOORS FD 1½ HOUR, and Section 1500, FACTORY FINISHING, System TR-6/OP-6, Premium Grade
Smoke Doors	S-label doors require Category H - Smoke & Draft Control Gasketing surface applied gasketing on the frame and on the meeting edge of pairs.

Positive Pressure Category A FD 1 Hour Door

COLUMN	1	2
FEATURE	UL or ITS/WHI (Note: All items may not be available with both agencies.)	
MAXIMUM OPENING SIZE	Singles: 4'0" x 9'0" (1219 x 2743mm). Transom: 4'0" x 4'0" in a separate frame only. Side Panels: 4'0" x 9'0" (1219 x 2743mm).	Pairs: 8'0" x 9'0" (2438 x 2743mm), including double egress
FACES	Wood veneer or medium density overlay.	Wood veneer or medium density overlay.
STILES AND RAILS	3/8" (16mm) Superstile with maple outer. Optional same species outer available. Top rail 1/4" (6.4mm). Bottom rail 1 1/16" (27mm). For rail and lock block reinforcement, see Door section table of contents.	
MAXIMUM WOOD VENEERED BEADED LITE	To 136 sq. in. (0.088m ²) of cutout (100 sq. in. (0.065m ²) of visible glass). Maximums: 13" (330mm) width, 34" (864mm) length. Minimum 5" (127mm) perimeter from cutout to top and sides or lock. V-9 bead compatible with face veneer. See Detail 12 for glass options.	
MAXIMUM METAL VISION PANEL (Visible glass)	To 100 sq. in. (0.065m ²) visible glass. 10" x 10", 8" x 12", 3" x 33", 5" x 20", 4" x 25", 6" x 16" sizes available. (254 x 254mm, 203 x 305mm, 76 x 838mm, 127 x 508mm, 102 x 635mm, 152 x 406mm sizes available.) Maximums: 12" (305mm) width, 33" (838mm) length. Minimum 5" (127mm) perimeter from cutout to top and sides or lock. Combined multiple openings up to 100 sq. in. (0.065m ²). Circular openings up to 11" (279mm) diameter. Larger lites available with special glass. No temperature rise over 100 in ² . See Detail 12 for glass options.	
MAXIMUM LOUVER SIZE (Not allowed with vision panel, exit devices, or smoke control doors)	24" x 24" (610 x 610mm) with 6" (152mm) perimeter at sides, 10" (254mm) at bottom. Fusible link louvers only.	
HINGES	Per NFPA 80 some specialty hinges allowed. Contact Algoma for information.	
LOCKSETS	All listed cylindrical, mortised, unit, card, electronic locks, and hospital push/pull to 5" (127mm) backset.	
PIVOTS	Top, intermediate & bottom must be listed offset. Rixon's #180, 280, 380, 480, FM19, 219, T117, T117 1/4, Unichecks 65 thru 68, or equal. Others as approved. Pocket pivots not allowed. Intermediate pivots required for label and warranty.	
CLOSERS	Listed surface type. Throughbolt fastening required unless optional reinforcement is specified. Listed floor closers as approved.	
FIRE EXIT HARDWARE	Singles: Listed rim or mortise type with 3/8" (16mm) throw or surface vertical rods to 4'0" x 9'0" (1219 x 2743mm). Pairs: Mortise type on active and surface vertical rods on inactive. Listed rim devices with removable mullion. Hardware must be listed for use on wood doors. SVR-LBR on both doors, Sargent PP and PR 8700 SVR-LBR. No floor holes required for SVR-LBR devices.	
OTHER PAIR HARDWARE	Pairs of doors with removable or fixed mullion between are considered as single swing.	Listed for use with wood doors. Surface or mortised door bolts. Manual, self-latching or automatic as codes allow.
Maximum trim: 3/4" (19mm) at bottom with standard rail. Door Bottoms: Max size 1"x1 1/16" listed surface or concealed.	Viewers: ITS/WHI up to 1" (25mm); UL up to 1" (25mm). Astragals and edge guards: Not allowed on this construction.	Electric Raceway: Available with label on all doors.