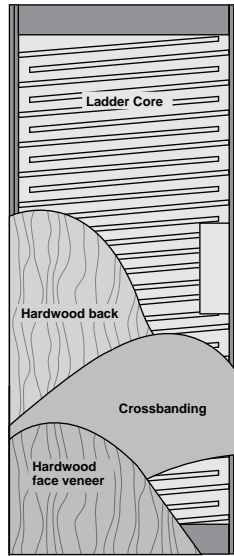


HC Hollow Core Door

Standard (SHC) or Institutional (IHC)



Algoma's architectural Hollow Core (SHC) is a durable lightweight and economical door. Excellent for bi-fold doors, sliding doors and low traffic areas.

Institutional Hollow Core Doors (IHC) feature 2½" (64mm) stiles and 10" (254mm) bottom rail.

Algoma only uses skins with face veneers at least .020" (0.5mm) thick at 12% moisture content.

Product Features

Thickness	1¾" (44mm) or 1⅝" (35mm).
Maximum size	Available prefit up to 4'0" x 8'0" (1219 x 2438mm). Minimum size: 1' x 6'8".
Stiles (Edge bands)	1" (25mm) 2-ply edge strips. Alternates: ME—same species or CE—compatible edges.
Special edge treatments	To conceal crossbands and greatly reduce edge damage, polymer edges available.
Top & bottom rails	5" (127mm) wood or particleboard with wood outer strip.
Core	Ladder core.
Lock blocks	5" x 20" (127mm x 51mm) wood or particleboard.
Faces	3-ply skins 0.10" (2.5mm) of all foreign and domestic species. Faces are a minimum of .020" (0.5mm) at 12% moisture content. All faces to be per WDMA I.S.1-A face grades.
Adhesives	Doors constructed using water-resistant adhesives (Type 2).
Veneer matching	Available in pairs or sets.
Details	Standard lites and louvers available not to exceed 40% of door area or 54" (1372mm) in length.
Machining	Available with hinge and lock machining as well as other hardware.
Finishing	Available in finishes with performance characteristics equivalent to AWI System TR-6, standard or custom colors. Also available primed, sealed, or sealed top and bottom edges only.
Warranty	For interior, one year limited warranty.
Standards met or exceeded	WDMA I.S.1-A Series, ARCHITECTURAL WOOD FLUSH DOORS; Architectural Woodwork Institute, Section 1300, ARCHITECTURAL FLUSH DOORS; and Section 1500 FACTORY FINISHING, System TR-6, Premium Grade.