

# V-9-C Labeled Wood Veneered Lite Beading\*

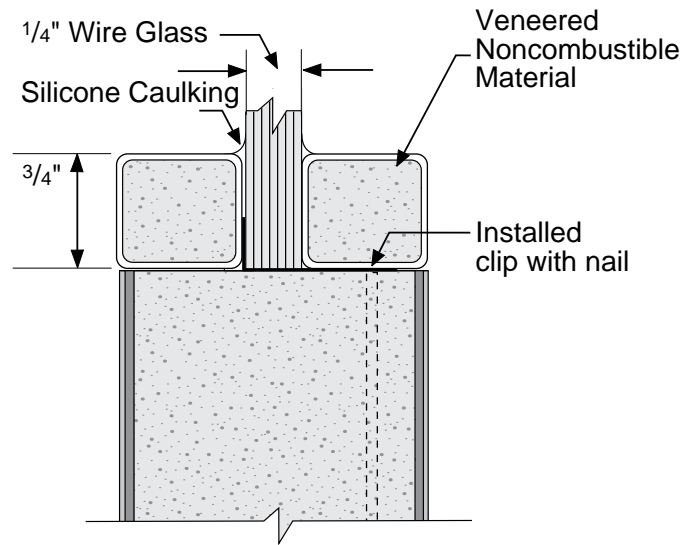


Illustration #1

Order by lite opening (cutout) size, the same as other wood beaded lites—not by exposed glass size as when ordering metal vision panels.

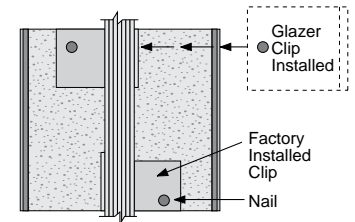


Illustration #2

## Product Features

<b>Use</b>	For use in FD ¾ Hour Fire Doors.
<b>Species Available</b>	Cherry, Mahogany, Natural Birch, Red Oak, Walnut and White Oak. Other species available by special order.
<b>Sizes</b>	Various sizes available in full-inch increments up to maximum area/size listed below.
<b>Listed</b>	UL and ITS-WH listed.
<b>Glass Size</b>	Glass should be cut 1/8" less in length and width than lite opening size.
<b>Maximum Cutout</b>	1415 sq. inches. Maximums: 30" width, 54" height. If larger lite required, see <b>Detail</b> 11 and 12.
<b>Maximum Visible Glass Size</b>	1296 sq. inches
<b>Parts List</b>	<ul style="list-style-type: none"> <li>1 Instruction Sheet</li> <li>8 Prefit wood beads with nails pre-fitted into the lite opening. One side of the opening has the beads fixed in place, while the other side is just tacked in place.</li> <li>1 Tube of Silicone caulk or glazing tape. (EPDM or Norton V990) <b>Supplied with glass by glazers.</b></li> <li>1 Piece of 1/4" fire rated glass per NFPA 80 labeled for Fire Protection Rating. <b>Supplied by glazers.</b></li> </ul> <p>Note: Glass should be cut 1/8" less in length and width than the lite opening size.</p>

## Installation Instructions

1. Verify that all parts needed for installation are included with wood lite kit.
2. Remove the fitted wood beads from both sides of the lite cutout.
3. Slide the 1/4" wire glass in over the rails and against the 1/4" flange on the factory installed metal clips.
4. Next position the additional loose clips on the black marks between the factory installed clips. Slip the 3/4" leg of each clip between the edge of the cutout and the glass so the nail hole will be on the side opposite the factory installed nail. See illustration #2. Nail these clips in place.
5. Apply the silicone caulk or glazing tape to the glass edge and re-insert and nail the four pre-fit beads on this side of the door. See illustration #1. Note: It is the responsibility of the glazer to determine how much caulk or glazing tape is required (based on glass thickness) to position the wood beads flush to both sides of the door.
6. On the opposite side, apply silicone caulk and complete the installation by re-installing and nailing the pre-fit beads on this side of the door. See illustration #1. Note: It is the responsibility of the glazer to determine how much caulk or glazing tape is required (based on glass thickness) to position the wood beads flush to both sides of the door.
7. Use caution in nailing beads so as to avoid striking bead.
8. Countersink nails and fill holes with matching putty.
9. Finish same as door faces. *You may prefer to finish beads before installation.*

## Note

Must specify glass type if other than 1/4" wire glass.

\*U.S. Patent No. 4,637,182

10/27/04



1001 Perry Street • Algoma, Wisconsin 54201  
 920.487.5221 • 1.800.678.8910 • FAX 920.487.3636  
 www.algomahardwoods.com • sales@algomahardwoods.com

Detail 5