

# Door Details

---

Topic	Page
Introduction .....	2
Metal vs. Wood Vision Panels .....	3
Labeled Wood Veneered Lite Beading* V-9 .....	4
Labeled Wood Veneered Lite Beading* V-9-C .....	5
Labeled FD 1/3 Hour Wood Lite Beading .....	6
Wood Details .....	7
Style #110 Labeled Metal Vision Panels .....	9
Special Lites .....	10
Fusible Link Louver .....	11
Astragals and Edge Guards .....	12
Rabbets .....	13
Radius Edges .....	14
Labeled FD 1/3 Hour Dutch Doors .....	15
Dutch Doors and Wood Astragals .....	16
Impact Resistant Door Edges .....	17
Applied Mouldings .....	18
Quirks .....	19
Flashing .....	20
Standard Wicket Door .....	21

\*U.S. Patent No. 4,637,182

# Introduction

---

All details are for interior applications unless otherwise noted.

When both lites and louvers are required in a non-labeled door, the same bead details should be used to achieve a uniform appearance.

Bead widths will vary depending on the glass thickness or louver thickness used. The standard allowance for glass is  $\frac{1}{4}$ ". Glass can vary  $\frac{1}{16}$ ".

Flush doors with the following hardware, lite and/or louver conditions are NOT warranted. (Exception: Special construction full glass doors are warranted.)

1. Cutouts for lites and/or louvers, any edge of which is less than 5" from any edge of the door.
2. Less than 5" between adjacent cutouts for hardware, lites, or louvers.
3. Cutout areas exceeding 40% of the door's surface or individual cutouts exceeding 54" in height.

# Metal Vision Panels vs. Veneer Wrapped Beads

Which Would You Prefer In Your Labeled Wood Fire Doors?



**You do have a choice.** You don't need to specify metal vision panels in wood fire doors. You can specify veneered beads that will be compatible with the veneer on the face of the door. Wood beads can also be field or factory finished using the same materials as those used on door faces.

**A better value.** In addition to the aesthetic appeal of wood, veneered beads will generally cost less than a metal vision panel after normal finishing of the primed vision panel to match the metal door frame.

Available in:

- Natural Birch
- Cherry
- Mahogany
- Red Oak
- White Oak
- Walnut

Other species by special order.

UL and ITS/WHI listings shown on Detail pages 4, 5, 6.

## Algoma Hardwoods Labeled Wood Lites (Based on standard 1/4" wired glass)

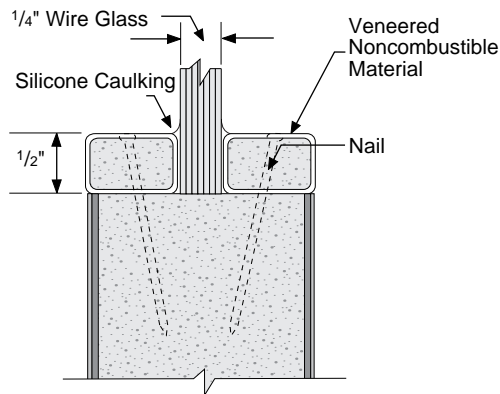
	FD 1/3 Hour Stave or Particleboard		FD 3/4 Hour V-9-C*		FD 1 Hour V-9*		FD 1 1/2 Hour V-9*	
	UL	ITS/WHI	UL	ITS/WHI	UL	ITS/WHI	UL	ITS/WHI
<b>Max. cutout size (order size)</b> <small>see note 5</small>	1296 in <sup>2</sup>	1296 in <sup>2</sup>	1415"	1415"	136 in <sup>2</sup>		136 in <sup>2</sup>	
<b>Max. width or length of cutout (order size)</b>	30"W 54"L	30"W 54"L	30"W 54"L	30"W 54"L	13"W 34"L	13"W 34"L	13"W 34"L	13"W 34"L
<b>Min. dimension from top or edge of door to edge of cutout</b>	5"	5"	5"	5"	5"	5"	5"	5"
<b>Ordering size for 1/4" wire glass</b>	Deduct 1/8" from width and length of order size.							

### Notes

- 1) All cutouts for wood beaded lites are located from top and lock edge of door.
- 2) In labeled doors, louvers and lites (vision panels) are not allowed in same door.
- 3) Multiple cutouts are allowed as long as total combined area does not exceed maximum cutout area shown above.
- 4) To maintain the label, the minimum dimension between adjacent lite cutouts and/or hardware cutouts must be 5" unless full glass full warranty door is specified.
- 5) Listed sizes apply to standard 1/4" wire glass. See Detail 11 and 12 for specific sizes or specific lite bead, glass and rating types.

\*U.S. Patent No. 4,637,182

# V-9 Labeled Wood Veneered Lite Beading\*



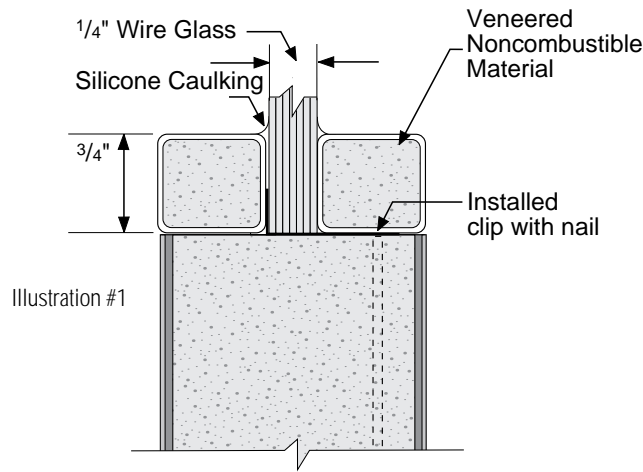
Order by lite opening (cutout) size, the same as other wood beaded lites—not by exposed glass size as when ordering metal vision panels.

## Product Features

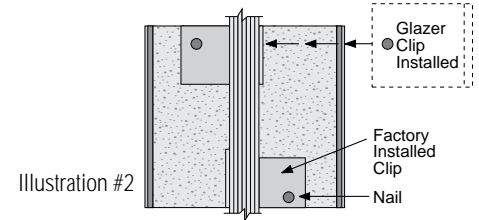
<b>Use</b>	For use in FD ¾, 1 and 1½ Hour Fire Doors. For larger sizes in FD ¾ Hour, see next page.
<b>Species Available</b>	Cherry, Mahogany, Natural Birch, Red Oak, Walnut and White Oak. Other species available by special order.
<b>Sizes</b>	Various sizes available in full-inch increments up to maximum area/size listed below.
<b>Listed</b>	UL and ITS-WH listed.
<b>Glass Size</b>	Check with factory.
<b>Maximum Cutout</b>	136 sq. inches. Maximums: 13" width, 34" height.
<b>Maximum Visible Glass Size</b>	100 sq. inches
<b>Parts List Neutral Pressure Doors</b>	1 Instruction Sheet 8 Prefit wood beads with nails pre-fitted into the lite opening. 1 Tube of Silicone caulk or glazing tape. (EPDM or Norton V990) <b>Supplied with glass by glazers.</b> 1 Piece of ¼" fire rated glass per NFPA 80 labeled for Fire Protection Rating. <b>Supplied by glazers.</b> Note: Glass should be cut ⅛" less in length and width than the lite opening size.
<b>Parts List UL 10C Positive Pressure Doors Category A &amp; B</b>	1 Instruction Sheet. 8 Prefit wood beads with nails pre-fitted into the lite opening. 1+ Pemko FG300S45 or FG3000S90 intumescent glazing tape which must be but between the bead and the glass. Because of variations in the glass, door and beads you might have to use a combination of the S45 & S90 to insure the beads are flush with the face of the door. Supplied by glazers. 1 Piece of ¼" fire rated glass per NFPA 80 labeled for Fire Protection Rating. Supplied by glazers. Note: Glass should be cut ⅛" less in length and width than the lite opening size.
<b>Installation Instructions</b>	<ol style="list-style-type: none"> <li>1. Verify that all parts needed for installation are available.</li> <li>2. Remove one set of wood beads from the door. Position the remaining set of beads flush to the surface of the door and nail in place.</li> <li>3. Apply a good bead of silicone caulk or glazing tape to the fixed wood bead on the surface where the glass will be placed. Note: It is the responsibility of the glazer to determine how much caulk or glazing tape is required (based on glass thickness) to position the wood beads flush to both sides of the door .</li> <li>4. Now place the glass against the fixed wood bead that has the silicone caulk or glazing tape applied.</li> <li>5. Next apply a good bead of silicone caulk or glazing tape to the glass around the perimeter.</li> <li>6. Nail the loose wood beads in place.</li> <li>7. Use caution in nailing beads so as to avoid striking bead.</li> <li>8. Countersink nails and fill holes with matching putty.</li> <li>9. Finish same as door faces. <i>You may prefer to finish beads before installation.</i></li> </ol>
<b>Note</b>	Must specify glass type if other than ¼" wire glass.

\*U.S. Patent No. 4,637,182

# V-9-C Labeled Wood Veneered Lite Beading\*



Order by lite opening (cutout) size, the same as other wood beaded lites—not by exposed glass size as when ordering metal vision panels.



## Product Features

<b>Use</b>	For use in FD ¾, 1 and 1½ Hour Fire Doors.
<b>Species Available</b>	Cherry, Mahogany, Natural Birch, Red Oak, Walnut and White Oak. Other species available by special order.
<b>Sizes</b>	Various sizes available in full-inch increments up to maximum area/size listed below.
<b>Listed</b>	UL and ITS-WH listed.
<b>Glass Size</b>	Check with factory.
<b>Maximum Cutout</b>	1415 sq. inches. Maximums: 30" width, 54" height. If larger lite required, see <b>Detail 11</b> and <b>12</b> .
<b>Maximum Visible Glass Size</b>	1296 sq. inches
<b>Parts List</b>	1 Instruction Sheet
<b>Neutral Pressure Doors</b>	8 Prefit wood beads with nails pre-fitted into the lite opening. 1 Tube of Silicone caulk or glazing tape. (EPDM or Norton V990) <b>Supplied with glass by glazers.</b> 1 Piece of ¼" fire rated glass per NFPA 80 labeled for Fire Protection Rating. <b>Supplied by glazers.</b> Note: Glass should be cut ⅛" less in length and width than the lite opening size.
<b>Parts List UL 10C</b>	1 Instruction Sheet.
<b>Positive Pressure Doors</b>	8 Prefit wood beads with nails pre-fitted into the lite opening.
<b>Category A &amp; B</b>	1+ Pemko FG300S45 or FG300S90 intumescent glazing tape which must be but between the bead and the glass. Because of variations in the glass, door and beads you might have to use a combination of the S45 & S90 to insure the beads are flush with the face of the door. Supplied by glazers. 1 Piece of ¼" fire rated glass per NFPA 80 labeled for Fire Protection Rating. Supplied by glazers. Note: Glass should be cut ⅛" less in length and width than the lite opening size.
<b>Installation Instructions</b>	<ol style="list-style-type: none"> <li>1. Verify that all parts needed for installation are included with wood lite kit.</li> <li>2. Remove the fitted wood beads from both sides of the lite cutout.</li> <li>3. Slide the ¼" wire glass in over the rails and against the ¼" flange on the factory installed metal clips.</li> <li>4. Next position the additional loose clips on the black marks between the factory installed clips. Slip the ¾" leg of each clip between the edge of the cutout and the glass so the nail hole will be on the side opposite the factory installed nail. See illustration #2. Nail these clips in place.</li> <li>5. Apply the silicone caulk or glazing tape to the glass edge and re-insert and nail the four pre-fit beads on this side of the door. See illustration #1. Note: It is the responsibility of the glazer to determine how much caulk or glazing tape is required (based on glass thickness) to position the wood beads flush to both sides of the door.</li> <li>6. On the opposite side, apply silicone caulk and complete the installation by re-installing and nailing the pre-fit beads on this side of the door. See illustration #1. Note: It is the responsibility of the glazer to determine how much caulk or glazing tape is required (based on glass thickness) to position the wood beads flush to both sides of the door.</li> <li>7. Use caution in nailing beads so as to avoid striking bead.</li> <li>8. Countersink nails and fill holes with matching putty.</li> <li>9. Finish same as door faces. <i>You may prefer to finish beads before installation.</i></li> </ol>

### Note

Must specify glass type if other than ¼" wire glass.

































