

FSC™ SLC-5 Stave Lumber Core

(Neutral or Positive Pressure)

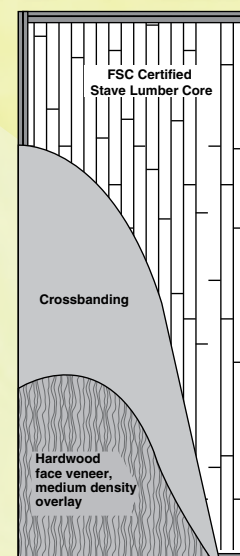
FD 1/3 Hour

Algoma's architectural FSC Certified Stave Lumber Core door features a kiln dried, low density wood block core which is bonded together under side pressure using the high frequency cure method.

Solid lumber stiles and rails are securely bonded to this core. To ensure strength, rigidity and freedom from telegraphing of core parts, this unitized core is then sanded before hot pressing a crossband and face on each side of the core assembly. This makes a high quality base for fine hardwood veneers and composite overlays for solid color finishes.

Algoma uses only face veneers at least .020" (0.5mm) thick at 12% moisture content.

Positive Pressure Note: Algoma recommends using Category B 1/3 hour single swing doors. Please refer to Positive Pressure in Product Features Detail Section below. The selection of Category B 1/3 hour doors will offer cost savings and no aesthetic compromise.



Product Features

THICKNESS – 1 3/4" (44mm) or 2 1/4" (57mm) available FD 1/3 hour labeled. 1 3/8" (35mm) available non-labeled. 2 1/4" (57mm) available.
MAXIMUM SIZE – Available prefit up to 4'0" x 10'0" (1219 x 3048mm). In FD 1/3 hour, 4'0" x 9'0" (1219 x 2743mm) is maximum for singles and 8'0" x 9'0" (2438 x 2743mm) for pairs. Also available in double egress pairs up to 8'0" x 9'0" (2438 x 2743mm). Paired construction will be SCLC core only.
STILES (EDGE BANDS) – 1 3/8" (35mm) prior to factory trimming, glued to core. ME-same species available, CE-compatible species standard.
SPECIAL EDGE TREATMENTS – To reduce edge damage, polymer edges with 1/3 hour label available.
TOP RAILS – 1 3/8" (35mm) prior to factory trimming, glued to core.
BOTTOM RAILS – 1 3/8" (35mm) Structural Composite Lumber (SCL).
CORE – FSC Certified low density wood blocks, kiln dried, not more than 2 1/2" wide; random lengths, joints well staggered.
CROSSBANDS – 1/16" (1.6mm) minimum wood-based composite.
FACES – Various foreign and domestic species, medium density overlay (MDO) and most low sheen .050 thickness High Pressure Decorative Laminates. Faces are a minimum of 1/50" (0.5mm) at 12% moisture content. All faces to be per WDMA I.S.1-A face grades unless otherwise specified.
ADHESIVE – Doors constructed using water-resistant adhesives (Type 1).
VENEER MATCHING – Available in pairs and sets (SCLC core only) or matching transoms.
DETAILS – Standard lites and louvers available not to exceed 40% of door area or 54" (1372mm) in length. Maximum glass opening on FD 1/3 hour doors is 1,296 sq. in. (0.836m ²) with wood beads and clips or metal vision panels. Applied mouldings, quirks, and divided lites also available. Specify flashing on exterior doors. Larger lites available with special glazing. Contact Algoma for positive pressure approvals.
MACHINING – Available with hinge and lock machining as well as rabbets, holders, drop seals, pivots, etc.
FINISHING – Available in finishes with performance characteristics equivalent to AWI System TR-6, standard or custom colors. Also available primed four sides, painted, or sealed top and bottom. Opaque finish (OP-6) on medium density overlay only.
WARRANTY – For interior, full warranty for life of original installation.
STANDARDS MET OR EXCEEDED – WDMA I.S.1-A Series, ARCHITECTURAL WOOD FLUSH DOORS. Architectural Woodwork Quality Standards Section 1300, Architectural Flush Doors and Section 1500, Factory Finish.
SPECIAL SERVICES – Provides detention security rating of Grade #40 with ASTM Impact Test F 476.
POSITIVE PRESSURE – CATEGORY A: Singles and pairs have intumescent built into the door, and no additional fire seals are required. If smoke and draft control doors are also required, then a category H seal must be applied to the frame.
CATEGORY B: Singles and pairs require a category G seal applied to the frame. Pairs also require a category G edge seal applied to one of the meeting edges.

The mark of responsible forestry © 1996 Forest Stewardship Council A.C.
COC: SW-COC-000342